

1. Firmware Updates with the eibPort Update Tool

(For devices with the hardware version 2.1)

With the help of the **eibPort** Update Tool it is able to update the firmware of your device. The update tool is a java program which runs on the most operating systems. Proceeding with this it is extremely important that the following hints will be read and observed exactly. If the update should fail the **eibPort** must be sent back to the manufacturer.

1.1. Important preparations:

- ✓ First of all please backup your actual project if not done anyway. Through an update the **eibPort** will fall back to delivery settings, so the project data gets lost.
- ✓ Please consider that the passwords of the visualization- user administration is not assumed while restoring. Please note the passwords, to be able to re-enter them after the project restoring.
- ✓ For the update you will need the update tool and the desired firmware image. This one is delivered as a zip-file which additionally contains a checksum file to verify that the data is transmitted correctly and avoiding failures. Both can be requested contacting info@bab-tec.de. The two files must be extracted to one folder.
- ✓ It is strongly recommended that you only perform the firmware update by having the **eibPort** in visibility. The feedback about update procedure status the **eibPort** is giving out by his five LEDs. A firmware update over one or more networks away is not possible, you have to be in the same physical and logical network like the **eibPort** is.
- ✓ Do your **eibPort** runs with DHCP this should be disabled and the **eibPort** should get a static IP-address.
- ✓ For the update you will need the **eibPort** String and the admin users' password.
- ✓ During the firmware update the **eibPort** will fall back to factory defaults. That means that the old IP-address is left, but password is set back to "eibPort"..

The whole update procedure approximately takes 15 minutes.

1.2. Proceeding:

Are all necessary preparations done please proceed as follows:

Hint: Please disable all security and firewall software during the update procedure, because it can disturb the communication. (The communication takes place with multicast on the UDP Port 1735).

Backup

- If not already happened before please backup your actual project.

Start the update tool

- Please start the update tool. In its help text all important information and hints are summarized.

Choose **eibPort**

- Below the help window on the left side you get shown all **eibPorts** which the update tool is able to find in the local network. Is the device located in the same network it is marked with green background color, is it located in another network it is marked with yellow background color. Beneath this display the main **eibPort** parameters are shown. Experienced users will now this from the Discovery Tool.
- In case there are several **eibPorts** mounted it is able to identify the chosen **eibPort** by using the „LED Test“ function.
- Mark the desired **eibPort** in the left column and enter the **eibPort** string and admin password on the right hand side.

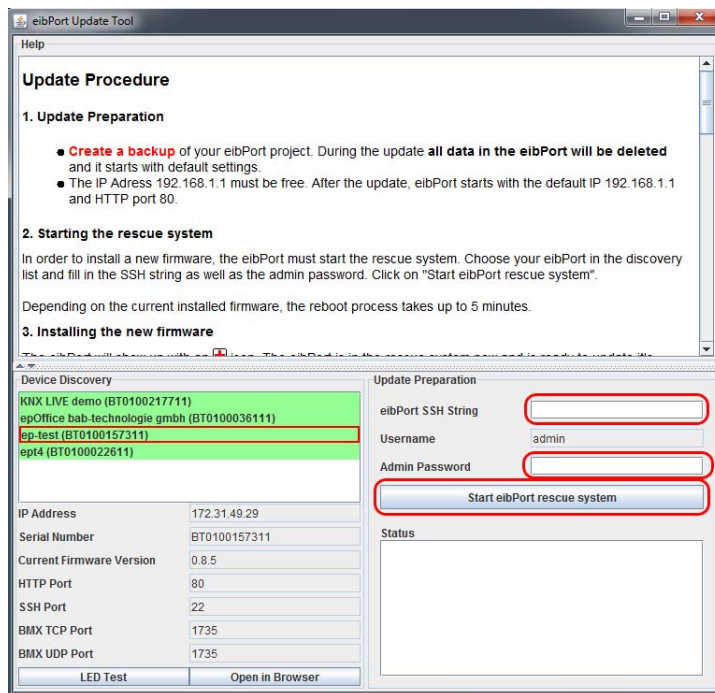


Figure 1: UpdateTool – Start eibPort rescue system

Start the rescue system

- Hit the button „Start **eibPort** rescue system“.
- In the status window beyond that you will be shown which actions will be executed. Is the **eibPort** already equipped with the rescue system, he will be rebooted with it. Is the **eibPort** not yet equipped with it will this step be done first (since the firmware version 0.10.2 all **eibPorts** are already equipped with this system). In the list of **eibPorts** on the left hand side the device will be first shown with blue colored background. After the rescue system is active the **eibPort** then will be shown with green colored background again and a red cross will appear in front of its name. In this moment the Power LED is orange, the LAN LED is blinking depending on network traffic and the BMX LED is flashing red.

Select firmware image

- If the **eibPort** is in rescue mode also the view of the update tool changes (expect the one **eibPort** is still marked) and on the right hand side the request to choose the right firmware file appears. When opening the image file the update tool automatically verifies with the enclosed md5 checksum file if the firmware image is transmitted correctly during the download. The following message occurs:

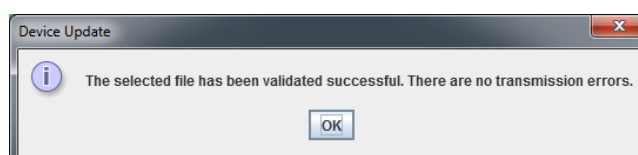


Figure 1: Update tool: - successfully validation of the firmware image

Start the update

- The update procedure will be started by hitting the button "Start **eibPort** update". After the firmware file is loaded into the device the **eibPort** will be busy circa 5 minutes with checking the file. Now the BMX and EIB LED are flashing red at the same time.

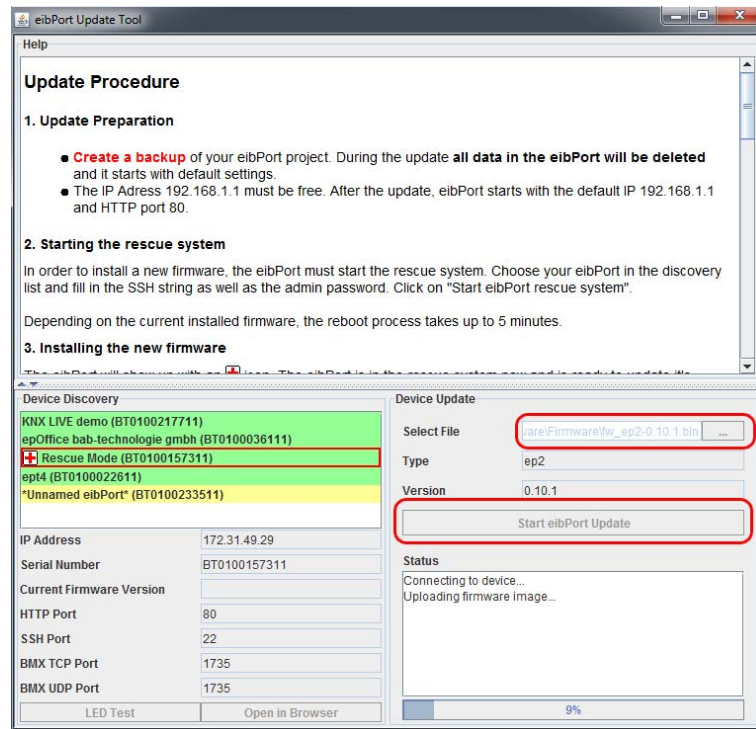


Figure2: UpdateTool – uploading firmware

- After successful validation the installation starts. This procedure again takes about 5 minutes. During that part all three LEDs in the middle are flashing red. The **eibPort** should not be disconnected from its power supply in any case. This can cause irreparable damages in the software so that the device has to be sent in.

Factory defaults

- When the new firmware is installed the **eibPort** reboots. After that he is located with factory settings in the network. He has its old ip-address but the password for the user "admin" is "eibPort" again.

Restore the backup file

- Now please upload the current backup file. All settings will be restored and the device will reboot. After this it is available with all the know settings but with the new firmware.

Hint: Please consider that the backup file does not contain any IP-address information. While backup only the port settings will be saved not the IP-Addresses (except NTP Timeserver).

Restoring the visualization user administration

In order to have the visualization user maintenance working again, the user passwords must be re-entered. After this the project data has to be saved to **eibPort** once more.

Hint: Please consider when restoring a backup file that you are not able to restore younger project files into elder version!!

2. Firmware updates over internet

(for all devices with the hardware version 2.0 and 1.0)

Firmware updates of older hardware versions happen, done by the company b.a.b-technologie gmbh, over an internet connection to the **eibPort**. To request a firmware update like this it will be enough to send an email to info@bab-tec.de. The updates normally happen in a four week cycle. The exact date is communicated by email then.

2.1. Proceeding for hardware-version 2.0 resp. 1.0

- ✓ It is strongly recommended that you backup your project before the update happens. Under certain circumstances your project can get lost during the update procedure. Furthermore the user specific data like your access information or the email settings will set back to default values. With the backup file those settings can easily be restored.
- ✓ At the update day please provide the **eibPort** on the ssh, http and bmx port. The ports must be forwarded in the router (not redirected). The **eibPort** ports can be changed if desired by browsing "System" > "configuration" > "advanced (bxd) EIB settings".
- ✓ The email with the update request should contain the following information:
<static or dynamical address of the router>, <portnumber(s)>

Hint: An Update using a VPN connection is only restricted possible and must be checked beforehand.

The update is happening sometime during the update day. When the update is done you will be informed by mail.

Hint: Do you want to join the pleasure of the latest firmware as well, it is first necessary to apply your eibPort with the newest hardware. Because this contains more memory space the further developing on the older hardware was not continued. If you are interested in ,upgrading' your eibPort hardware please contact info@bab-tec.de.