



BAB TECHNOLOGIE GmbH

BAB STARTER

Documentation

Version: 1.0.17
Type: Software

Manual version IV
As of 07/2017
Date: 12. July 2017

EN



BAB TECHNOLOGIE GmbH

in INHOUSE Dortmund
Rosemeyerstr. 14
44139 Dortmund

info@bab-tec.de

Tel.: +49 (0) 231 – 476 425 - 30
Fax: +49 (0) 231 – 476 425 - 59
www.bab-tec.de



TABLE OF CONTENTS

1	Introduction.....	5
1.1	Range of functions.....	5
1.2	Important information on the operating instructions	5
2	Installation.....	6
2.1	Microsoft Windows installation	6
2.2	MAC OS X installation	8
3	Startscreen.....	12
3.1	Search for devices... ..	12
3.2	Add devices manually... ..	13
3.3	Visited devices	14
3.4	Settings	15
	Speed up EIBPORT start	15
	Logs	15
3.5	About BAB STARTER	16
4	Devices menu.....	17
4.1	Device menu for EIBPORT.....	17
4.1.1	Java based areas in EIBPORT	17
4.1.2	Device menu for EIBPORT – details.....	18
	Change network settings	18
	Check settings.....	18
	Autostart Settings	19
	ADD Credentials.....	20
4.2	Device menu for CUBEVISION MODULE.....	21
4.2.1	Device menu for CUBEVISION MODULE – details.....	21
	Store registration data.....	21
4.2.2	Device menu for CUBEVISION MODULE – Start... ..	22
4.3	Device menu for web-based BAB devices.....	23



LIST OF FIGURES

Figure 1: Windows setup icon	6
Figure 2: Windows InstallShield Wizard	6
Figure 3: Windows installation index	7
Figure 4: check and start Windows setup	7
Figure 5: finish Windows installation.....	8
Figure 6: Windows Start menu entry	8
Figure 7: MAC OS X security settings	9
Figure 8: MAC OS X installation process – introduction	9
Figure 9: MAC OS X installation process – licence agreement	10
Figure 10: MAC OS X installation process – select place of installation	10
Figure 11: MAC OS X installation process – start installation	11
Figure 12: MAC OS X – BAB STARTER program icon	11
Figure 13: Search for devices.....	12
Figure 14: add device manually... ..	13
Figure 15: Visited devices	14
Figure 16: Delete visited devices	14
Figure 17: BAB STARTER settings.....	15
Figure 18: About BAB STARTER.....	16
Figure 19: device menu for EIBPORT	17
Figure 20: device menu for EIBPORT – details.....	18
Figure 21: Activate autostart	19
Figure 22: device menu for CUBEVISION MODULE.....	21
Figure 23: device menu for CUBEVISION MODULE – details	21
Figure 24: device menu for web-based BAB devices.....	23



1 INTRODUCTION

The BAB STARTER is a platform-independent program for central access to all BAB devices. Additionally, the java based editros of the products EIBPORT, CUBEVISION MODULE, FACILITY MASTER and the EnOcean Editors of CUBEVISION MODULE and LINKMODULE can be started independently of a local Java installation.

1.1 RANGE OF FUNCTIONS

The BAB STARTER offers the following functionalities (references to the relevant chapters in brackets):

- Search for devices ("*Search for devices...*")
- Add devices manually ("*Add devices manually...*")
- Display device details ("*Devices* menu")
- Changes to EIBPORT network settings ("*Change network settings*")
- Review of the most important EIBPORT parameters ("*Check settings*")
- Call up EIBPORT JAVA CONTROL view
- Call up EIBPORT CONTROL L view
- Call up EIBPORT CUBEVISION view
- Call up EIBPORT Editor
- Call up EIBPORT System
- Call up CUBEVISION MODULE CUBEVISION view ("*Device menu for CUBEVISION MODULE – Start...*")
- Call up CUBEVISION MODULE Editor ("*Device menu for CUBEVISION MODULE – Start...*")
- Call up CUBEVISION MODULE configuration ("*Device menu for CUBEVISION MODULE – Start...*")
- Accelerate EIBPORT Start
- Autostart for the EIBPORT JAVA CONTROL Visualisation

The following devices are displayed in the BAB STARTER:

- **EIBPORT**
- **CUBEVISIONMODULE**
- **APPMODULE**
- **DATALOGGER**
- **KNXEASY**
- **AUDIOMODULE**
- **AUDIOSERVER**
- **LINKMODULE**
- **ELMMODULE**
- **DUODMX GATEWAY**
- **FACILITYMASTER**

1.2 IMPORTANT INFORMATION ON THE OPERATING INSTRUCTIONS

Please be aware that all the statements and illustrations in these operating instructions are non-binding. In the interests of our customers, the software described in these operating instructions is being constantly developed further. Therefore, the information provided in these operating instructions may no longer be accurate under certain circumstances. Information on the current BAB STARTER software and also on this description ("**BAB STARTER documentation**") can be found at www.bab-tec.de.

2 INSTALLATION

Load the BAB STARTER setup file from our website.

<http://bab-tec.de/index.php/bab-starter-en.html>

For Microsoft Windows you receive a *.zip file to download. For MAC OS X, a *.mpkg file is available. If you use Linux, please contact us for installation advice (info@bab-tec.de).

2.1 MICROSOFT WINDOWS INSTALLATION

- Extract the downloaded *.zip file into a folder of your choice and click on the "BAB_STARTER_[Version]_setup.exe" to start the installation.



Figure 1: Windows setup icon

- The installation routine prepares the installation process and then displays the InstallShield Wizard. Follow the instructions and click on "Continue".



Figure 2: Windows InstallShield Wizard

- Read the licence agreement and accept it using the appropriate button. Click on "Continue".



- Choose the correct installation index for the BAB STARTER.



Figure 3: Windows installation index

- Review the setup settings and click on "Install".

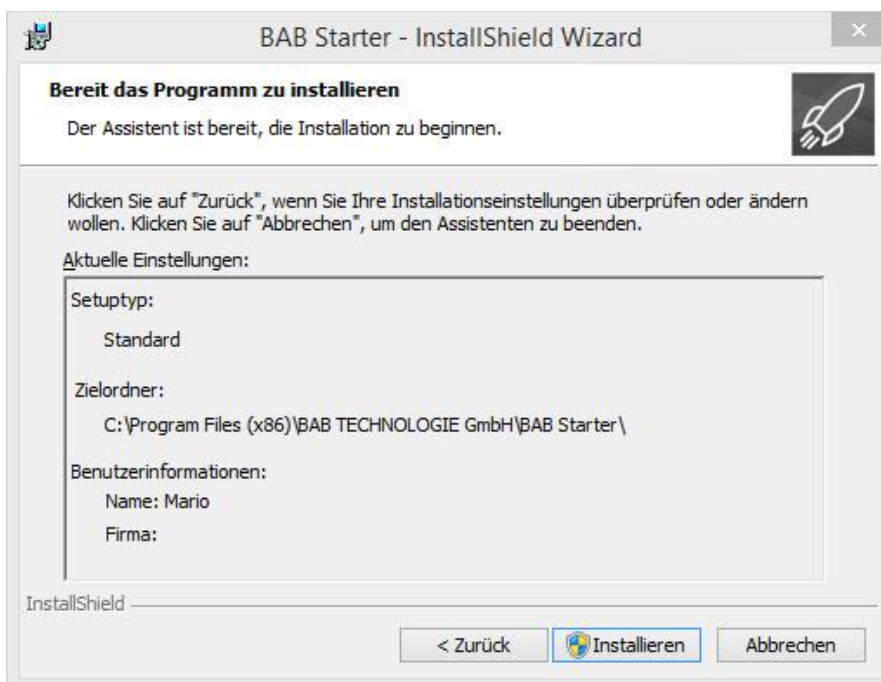


Figure 4: check and start Windows setup

- The installation process starts. In some Windows systems, a user account management dialogue appears. Confirm the notification with "YES".

- After successful installation, the InstallShield Wizard notifies you of the success. Confirm with "Finish".



Figure 5: finish Windows installation

Thereafter, the BAB STARTER can be found in the Windows Start menu under "BAB TECHNOLOGIE GmbH".

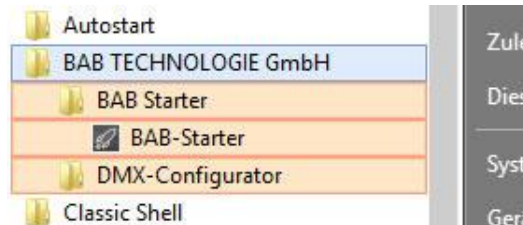


Figure 6: Windows Start menu entry

2.2 MAC OS X INSTALLATION

Double click on "BAB STARTER_[Version].mpkg".



BAB STARTER.mpkg

It is possible that your system will advise you of a non-verified developer. In this regard, please note the information on the "Apple Gatekeeper":



"With Gatekeeper, you have more control over what you install. You can choose the safest option and allow only apps that come from the Mac App Store to be opened. With the standard option, only apps that come either from the Mac App Store or from verified developers will be allowed. Or you can choose for all apps to be opened, as in the previous versions of OS X. You can find the options for Gatekeeper in the menu under "Apple" > "System settings..." > "Security" > "General" under the heading "Allow programs from the following sources:""

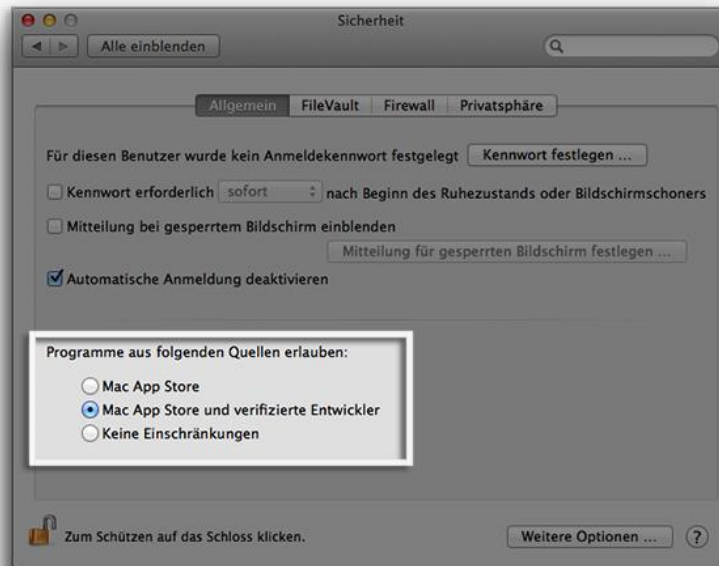


Figure 7: MAC OS X security settings

[Taken from <https://support.apple.com/de-de/HT202491>, 05/10/2015]

Once you have allowed the execution of the setup file in this way and have executed the file, you will be led through the installation process.

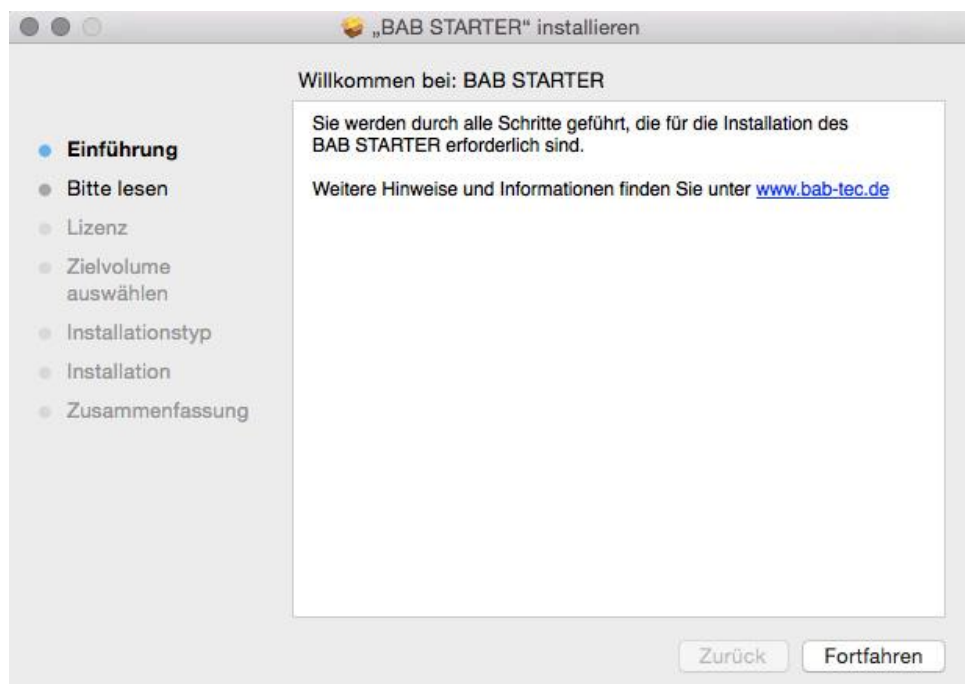


Figure 8: MAC OS X installation process – introduction

- Click on "Continue" to continue the installation.

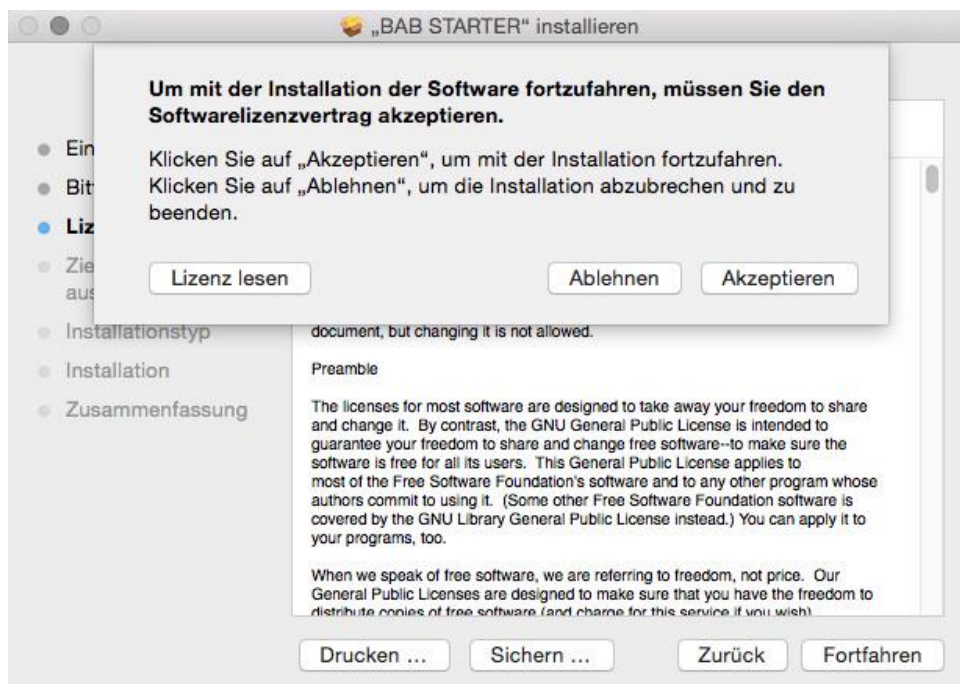


Figure 9: MAC OS X installation process – licence agreement

- Please take note of the licence agreements and confirm them by clicking on "Accept". You can then select a different place of installation if you wish:



Figure 10: MAC OS X installation process – select place of installation

- Click on "Install" and confirm the action with the user authentication.

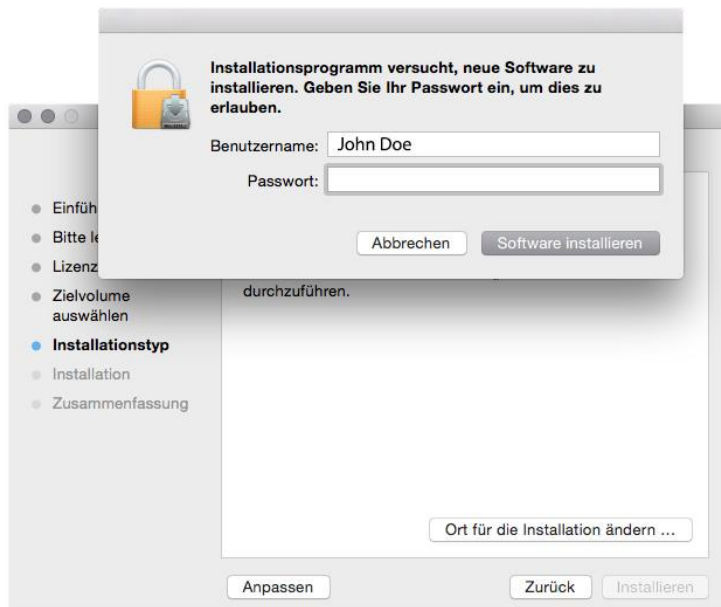


Figure 11: MAC OS X installation process – start installation

The message "The installation was successful" confirms the successful installation. The BAB STARTER symbol now appears in the "Programs" folder.



Figure 12: MAC OS X – BAB STARTER program icon

3 STARTSCREEN

- Visited devices
- Search for devices...
- Add device manually... (see chapter "*Add devices manually...*")
- Settings (see chapter "Settings")
- Via STARTER (see chapter "*About BAB STARTER*")

3.1 SEARCH FOR DEVICES...

The BAB STARTER searches for all the BAB devices available in the network and displays them with their series number and individual device name ("Devices found").

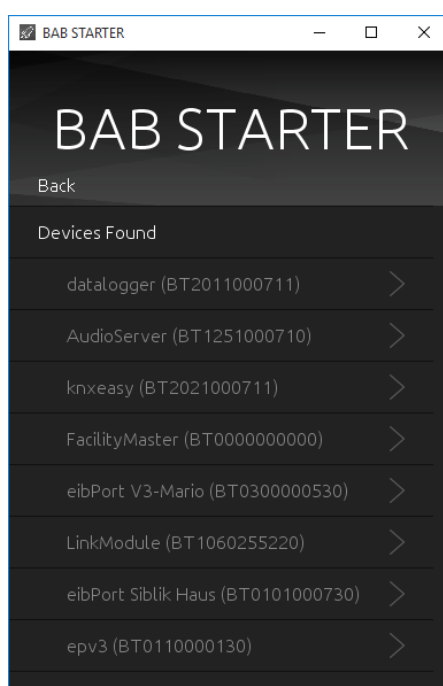


Figure 13: Search for devices

Note: The device name can be adapted individually in each device and does not have to correspond to the name of the device. For example, the EIBPORT device name can be "My home".



3.2 ADD DEVICES MANUALLY...

If you would like to add a device to the list that was not found in the devices search (e.g. devices that are available via an internet connection), this is possible here. To this end, enter the host name (or permanent IP address) and the http port of the device and click on "Connect".

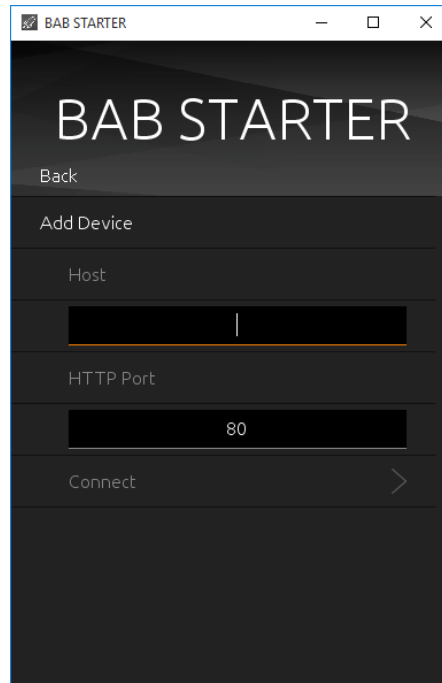


Figure 14: add device manually...

Note: For access via the internet, corresponding adaptations (port forwarding, gateway address) must be carried out locally.

3.3 VISITED DEVICES

Already visited devices will be automatically shown in the list of visited devices. The availability of the devices will be automatically proved during the start of BAB STARTER.

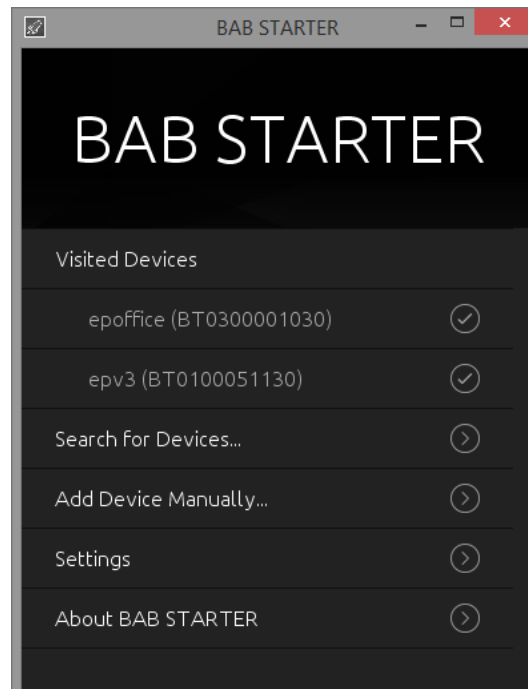


Figure 15: Visited devices

Delete entries

In order to delete older entries from the list, please use a right click on the desired entry. With the “delete” function the corresponding entry will be erased.

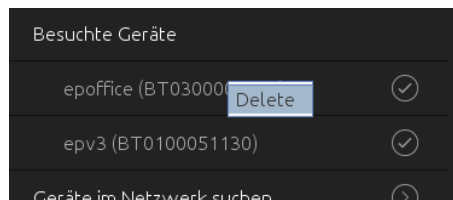


Figure 16: Delete visited devices



3.4 SETTINGS

Here you can find the settings for the BAB STARTER program (Device-specific settings are effected elsewhere).

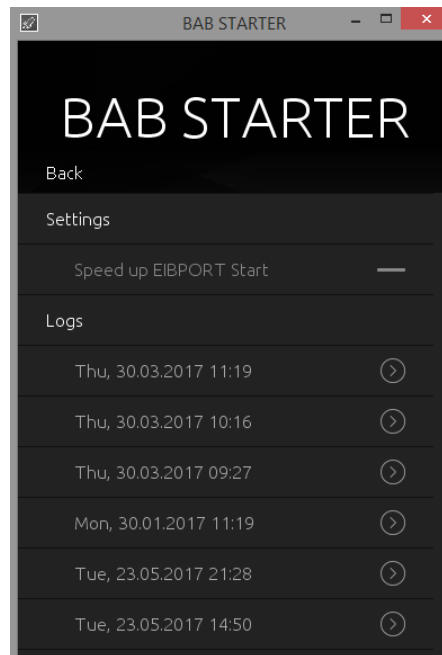


Figure 17: BAB STARTER settings

SPEED UP EIBPORT START

The cache serves to buffer content in order to accelerate the starting of Java-based software components (CUBEVISION MODULE / EIBPORT). If content has been transferred erroneously, deactivating the cache serves to reload the content.

LOGS

Here it is possible look at log messages of the BAB STARTER. If you have problems while starting java based applications of the different devices, they could be important in order to provide you support. The log messages are saved as text files.

3.5 ABOUT BAB STARTER

In the menu item "About BAB STARTER", information about the software and the manufacturer is displayed.

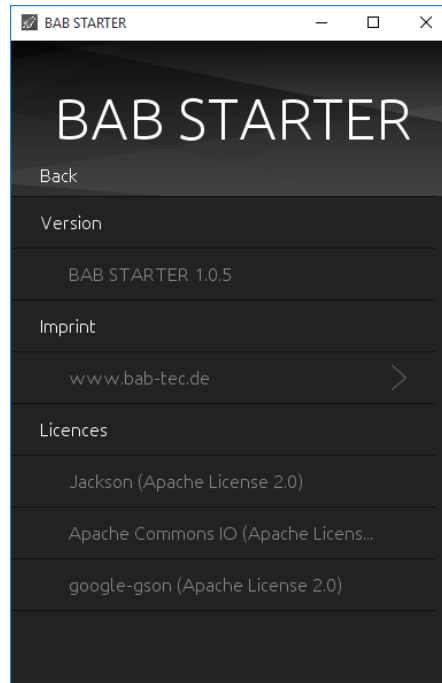


Figure 18: About BAB STARTER

Version

Shows the current BAB STARTER version.

Imprint

Refers to the imprint of BAB TECHNOLOGIE GmbH.

Licences

Open-source licences used in BAB STARTER.



4 DEVICES MENU

If the BAB STARTER finds devices in the network, or if devices were added manually, these appear in the device list with the individual device name and the series number under "Devices" (if a device has already been called up) or under "Search for devices" > "Devices found" (if no device has been called up so far).

To reach the desired device menu, simply click on the corresponding entry.

Note: The available device settings differ depending on the device type accessed.

4.1 DEVICE MENU FOR EIBPORT

When an EIBPORT entry is been clicked, the device menu opens. From here you have access to all EIBPORT areas. In case of browser based areas BAB STARTER forwards you towards the standard browser of your operating system. The java based applications are directly opened in BAB STARTER.

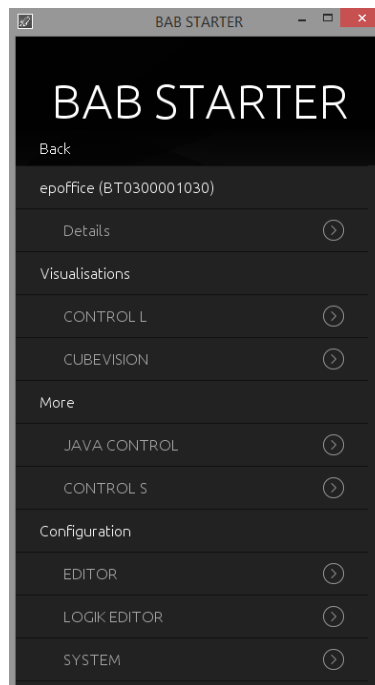


Figure 19: device menu for EIBPORT

4.1.1 JAVA BASED AREAS IN EIBPORT

- Java CONTROL = Java visualisation of EIBPORT
- EDITOR = Access to the Editor window with Visualisation Editor, Job Editor, CUBEVISION Editor
- SYSTEM = Access to the "ConfigTool" of the EIBPORT to set up network, phys. Address and so on.

4.1.2 DEVICE MENU FOR EIBPORT – DETAILS

Under the individual device name, the series number, firmware, the host name / IP address ("Host") and the subnet mask are displayed.

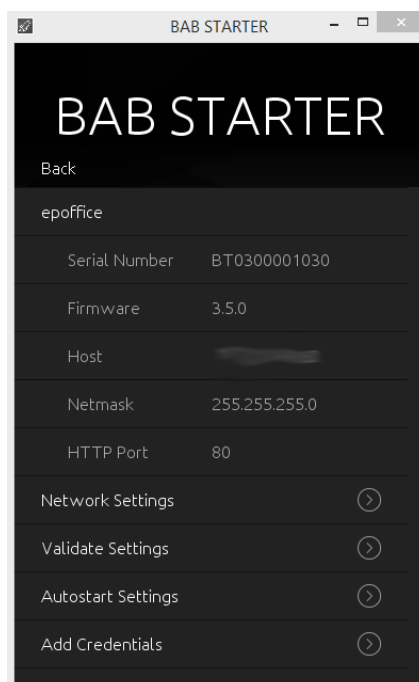


Figure 20: device menu for EIBPORT – details

CHANGE NETWORK SETTINGS

This menu is used to change the IP address settings of the EIBPORT. These include:

- EIBPORT name (individual device name)
- DHCP active / not active
- IP address
- Subnet mask
- Gateway
- DNS server 1 – 3

To adopt the settings ("Adopt settings"), the EIBPORT string and the admin user password must be entered correctly.

CHECK SETTINGS

Once the EIBPORT string and the admin password have been entered, the most important system-related settings of EIBPORT are reviewed. These include:

- **Gateway** = It is checked whether the standard gateway entered is accessible from the EIBPORT (The gateway is required so that the EIBPORT can communicate externally and so that it can be accessed from outside).
- **DNS server #1 - #3** = It is checked whether the DNS server addresses can be reached (The DNS server addresses are required to enable a name dissolution; if this is not available, the EIBPORT cannot dissolve host names into IP addresses. Several services depend on this).
- **Ping external IP** = An external IP address is addressed via PING command from the EIBPORT (Checks whether communication with an external address can take place).
- **Ping external host** = An external host address is addressed from the EIBPORT via PING (Checks whether communication with an external address including a name dissolution can take place).
- **NTP server #1 - #3** = The accessibility of the NTP server entries is checked.



- At least **2 tunneling addresses** = It is checked whether at least 2 addresses are set under "indiv. address for KNXnet/IP tunneling" (Here, at least 2 addresses are required to allow a KNXnet/IP tunneling connection to be created from the ETS 5).
- **Job: date/time receiver** = Checks whether jobs were created for the date and time synchronisation (This or the use of NTP time servers is important to ensure a correct system time).
- Time **synchronised** = Synchronises the system time of the EIBPORT automatically.

AUTOSTART SETTINGS

With the help of the Autostart Settings it is possible to access the EIBPORT java visualisation directly while starting BAB STARTER. In this way it is for instance possible to start the visualisation with the start of a Touch Panel at once.

In order to set up the Autostart, please proceed as follows.

- Enable the Autostart with the Button "Autostart Active"
- Enter Username and Password of the visualisation user. If there should not be any selection of visualisation projects no more, please use an user account which only has access to one visualisation project.

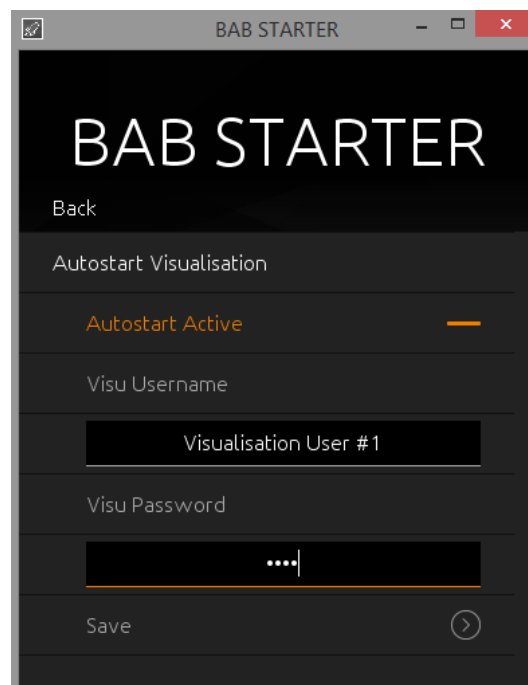
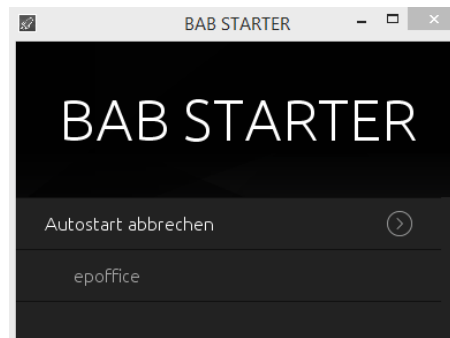


Figure 21: Activate autostart

- Press on "Save". The autostart function will be active with the next start of BAB STARTER.
- No move the BAB STARTER Icon into the Autostart folder of your computer (Windows: Autostart, MAC "Login items" of the corresponding user).

Disable Autostart

If BAB STARTER is started in the autostart mode, a display with the opportunity to abort the autostart procedure is been shown for 5 seconds. BAB STARTER will then proceed in its normal mode.



ADD CREDENTIALS

The registration data stored here is stored locally in the BAB STARTER so that access can take place without the user data having to be entered again.



4.2 DEVICE MENU FOR CUBEVISION MODULE

If a CUBEVISION MODULE is called up with the BAB STARTER, the menu appears as follows:

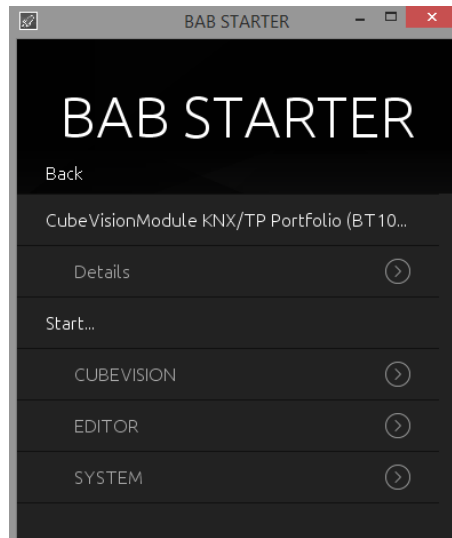


Figure 22: device menu for CUBEVISION MODULE

4.2.1 DEVICE MENU FOR CUBEVISION MODULE – DETAILS

Under the individual device name, the series number, firmware, the host name / IP address ("Host") and the subnet mask are displayed.

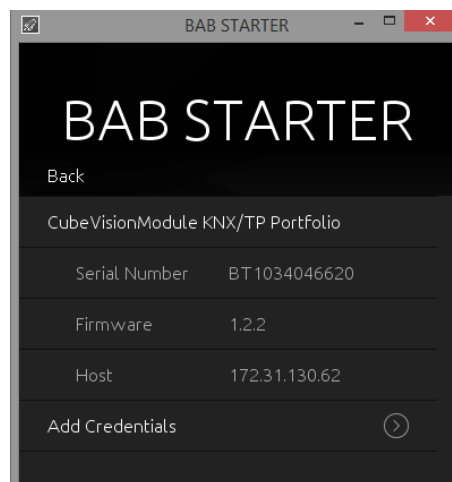


Figure 23: device menu for CUBEVISION MODULE – details

STORE REGISTRATION DATA

Optional menu item in CUBEVISION MODULE. The registration data stored here is stored locally in the BAB STARTER so that access can take place without the user data having to be entered again.



4.2.2 DEVICE MENU FOR CUBEVISION MODULE – START...

The "Start..." menu offers access to all the important CUBEVISION MODULE functions. Functions that require a Java VM are started by the BAB STARTER directly without a Java VM having to be installed and specially configured. The following CUBEVISION MODULE functionalities can be accessed.

- **CUBEVISION** = The CUBEVISION view of the CUBEVISION MODULE is opened in the browser
- **Editor** = Opens the CUBEVISION MODULE Editor, WITHOUT a Java installation being required.
- **Configuration** = Opens the CUBEVISION MODULE configuration in a browser window

Note: Please note that you require the relevant user data for the different CUBEVISION MODULE levels.



4.3 DEVICE MENU FOR WEB-BASED BAB DEVICES

For all web-based devices apart from EIBPORT and CUBEVISION MODULE, the BAB STARTER displays the series number, the firmware version and the current (host / IP) address. A direct connection from the devices is not possible. To connect to such a device, simply enter the address indicated under "Host" in your browser address line. You must proceed in this manner with the following devices:

- **APPMODULE**
- **DATALOGGER**
- **KNXCONVERTER**
- **AUDIOMODULE**
- **AUDIOSERVER**
- **LINKMODULE**
- **PVMODULE**
- **ELMMODULE**
- **DUODMX GATEWAY**
- **FACILITYMASTER**

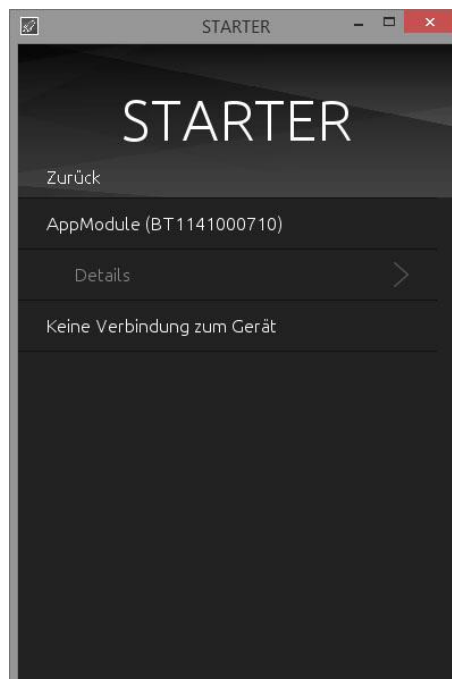


Figure 24: device menu for web-based BAB devices