



# 1 EIBPORT VERSION 3 UPDATE PROCEDURE

You will find a description of the update procedure additionally in the top part of the update tool. The LED codes are also mentioned there.

## UPDATE PREPARATIONS

The eibPort must be in the same subnet as the pc from which the update will be done. Remote updates are not possible! **Create a backup** from your current project. With the firmware update the complete project data is been deleted. After it the eibPort is in factory default (except the network settings if desired).

## INSTALL NEW FIRMWARE

The selected eibPort is red framed when chosen. On the left side the update user interface is shown. Please fill in the authentication data, choose the desired firmware image and then click on „*Start eibPort Update*“.

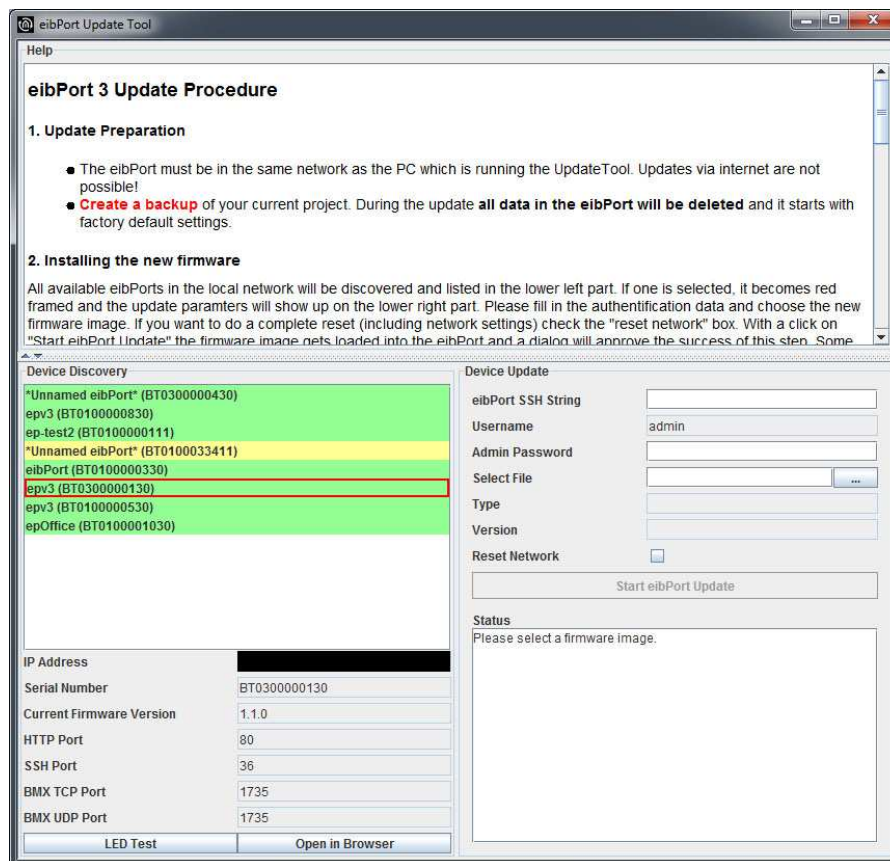


Figure1: eibPort Update Tool

### Reset network settings

If you wish that the eibPort is available with default network settings after the update the flag “*Reset network*” must be enabled. Then the eibPort is available within the IP-address 192.168.1.222 and http port 80. If the eibPort should keep its current IP-address this option should be leaved disabled.

The firmware image is loaded into the eibPort and is then been verified. In the status window the details about the update progress are shown. It is been ended with the message „Upload finished successfully“. Then a dialogues comes up:

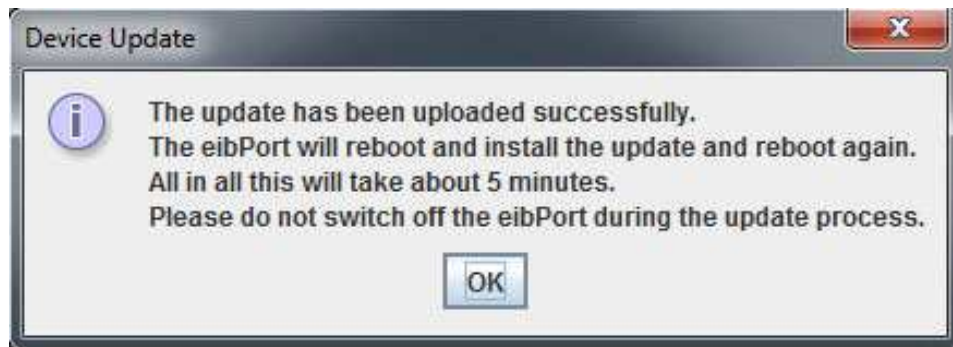


Figure 2: Update is successfully loaded

While this dialogue is displayed the Update Tool proceeds with its work in the background. That means that even if this window is not acknowledged by hitting “OK” button, the update progress still remains.

Depending on the firmware loaded the update lasts about 5 to 8 minutes. The eibPort is listed with purple background colour for this period. As long as the eibPort stays in this mode the input arrays of the update tool are locked.

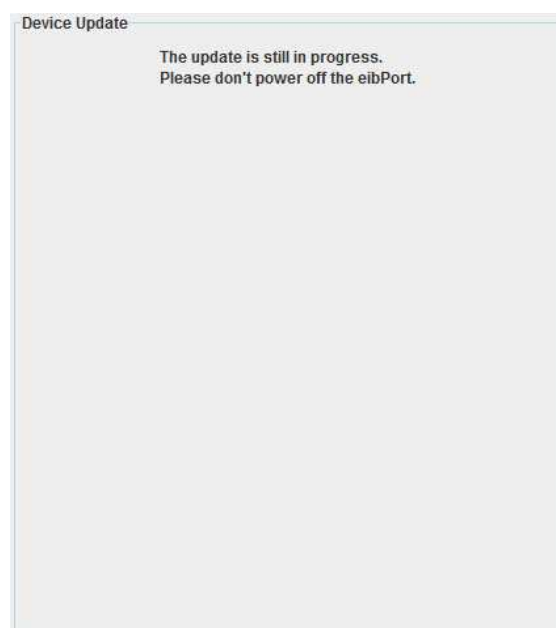


Figure 3: Update still in progress

**Attention: Please do not cut the eibPort from its power supply in any cases. And please do not start the update procedure a second time while it is running!**

After the update is successfully installed, the eibPort is shown with its serial number and green background colour in the device list. The update then is been completed.



## 2 LED CODES

---

During the Update procedure the LEDs are indicating in which status the update procedure is been currently.

### EIBPORT IN NORMAL OPERATION / FIRMWARE IS BEEN LOADED

---

LED 1: GREEN

LED 2: GREEN

LED 3: GREEN / flashing ORANGE depending on Bus traffic

LED 4: OFF

LED 5: GREEN / ORANGE depending on LAN traffic

### IMAGE IS SUCCESSFULLY LOADED / IS BEEN VERIFIED

---



LED 1: flashing GREEN/ORANGE



LED 2: OFF



LED 3: OFF



LED 4: OFF



LED 5: flashing GREEN/ ORANGE depending on LAN traffic

### FIRNWARE IS BEEN INSTALLED

---



LED 1: flashing GREEN/ORANGE



LED 2: flashing RED



LED 3: flashing RED



LED 4: flashing RED



LED 5: flashing GREEN / ORANGE depending on LAN traffic

### DEVICE IS BOOTING

---



LED 1: ORANGE



LED 2: OFF



LED 3: OFF



LED 4: OFF



LED 5: GREEN / ORANGE depending on LAN traffic